

Basic Needs & Health Services

Demographics

127

women responded to the survey.

79%

were between the age of 25-64yrs.

50%

identified as Inuit.

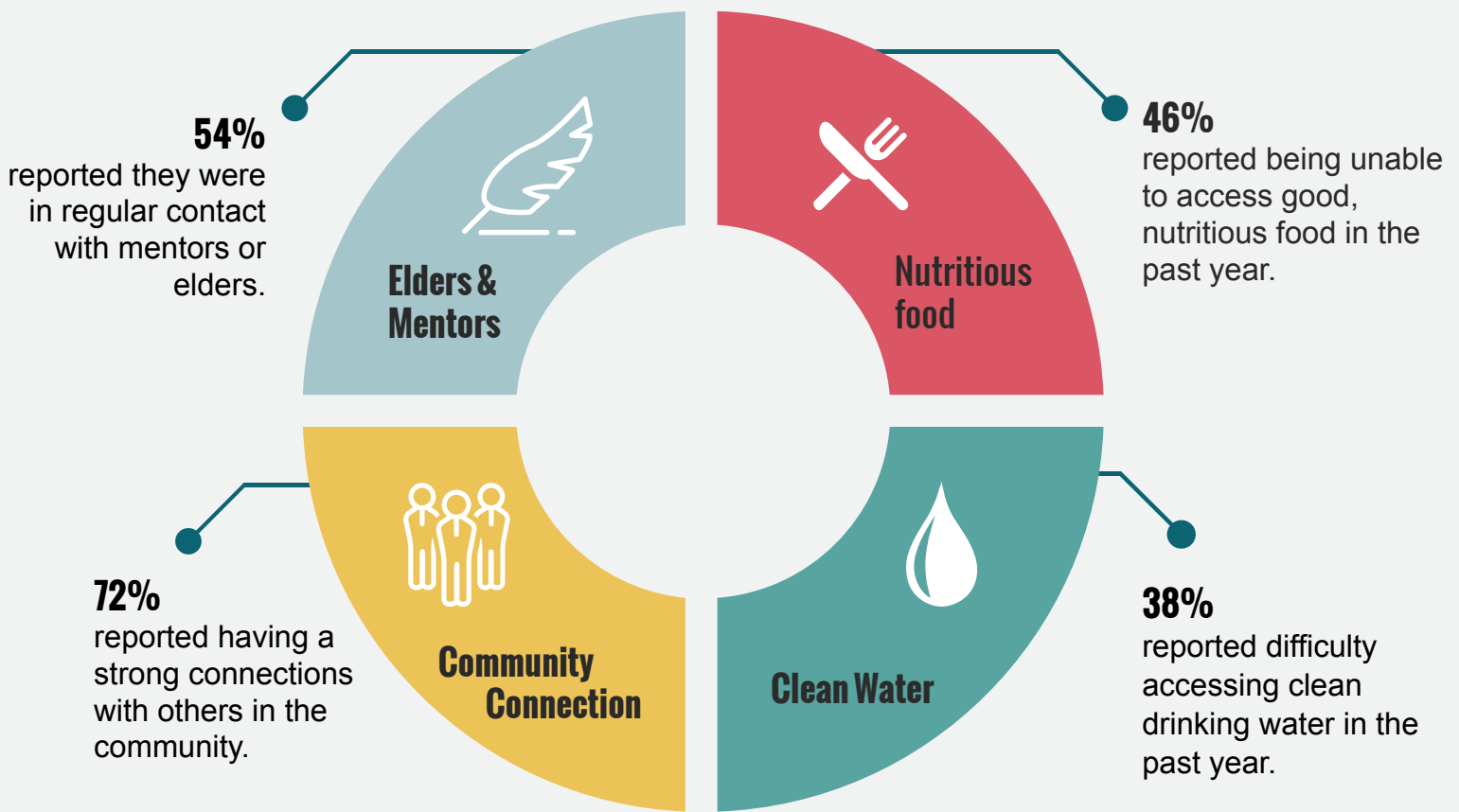
11%

identified as homosexual, bisexual or two-spirited.

11%

reported living with a disability.

Basic Needs & Supports



Basic Needs & Support Barriers



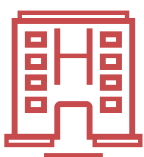
30% stated a lack of money was why they had difficulty meeting basic needs.



18% stated that lack of time/busyness were barriers to connecting with others in the community. Other barriers identified were: distance, community divides, being new in the community, money, and a lack of social gathering places.

Access to Health Services

Some women were unable to access health services they needed:



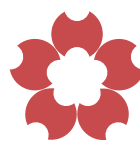
General Health

52%



Mental Health

32%



Sexual or Reproductive Health

10%



Drug or alcohol counselling

2%

In partnership with the University of Guelph, ON and community partners in Labrador, the information presented was gathered from a 2018 survey on women's wellbeing in Happy Valley-Goose Bay. The project received support from the Social Science and Humanities Research Council of Canada.